

Sewing Equipment



Turn to the sewing equipment page in your sewing packet.

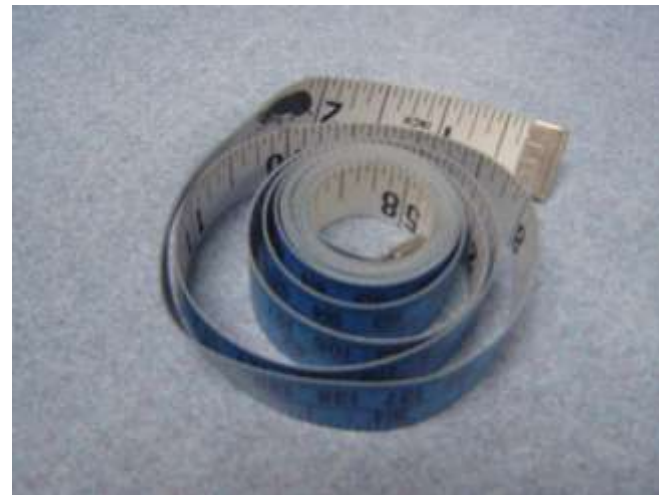


Sewing Equipment

- Sewing tools can be used to measure, mark, cut, and sew fabric.
- Use correct equipment for the task!

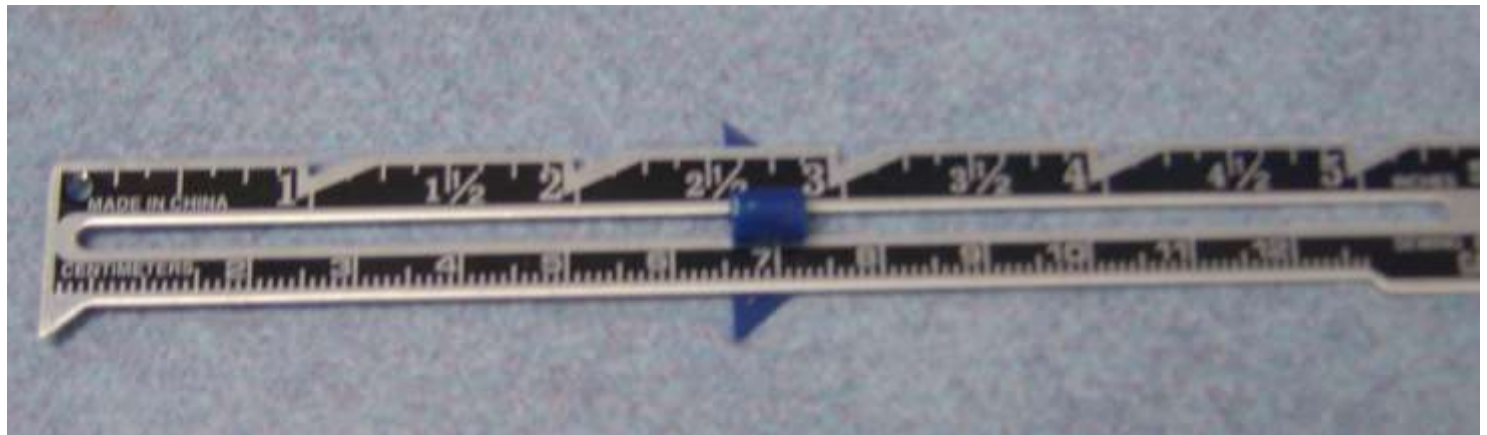
Measuring Tools

- Tape measure
 - Used to take body measurements
 - 60 inches long
 - Made of plastic or strong fabric that does not stretch



Measuring Tools

- Sewing (seam) gauge
 - 6 inch ruler with a sliding marker, used to measure short distances



Marking Tools

- Tracing wheel
- Tailor's pencil
- Tailor's chalk
- Tracing paper

– All used to transfer pattern markings to the fabric



Cutting Tools

■ Shears

- Longer than scissors
- Bent handle allows fabric to lie flat as it is cut
- Used to cut fabric



Cutting Tools

■ Scissors

- Usually short
- Used to trim seams and threads



Cutting Tools

- Pinking shears

- Zig zag cutting edge
- Used to give seam edges a finished look
- Prevent raveling
- Give a decorative edge



Cutting Tools

- Seam ripper
 - Used to undo mistakes
 - Has a sharp edge!



Sewing Tools

■ Needles

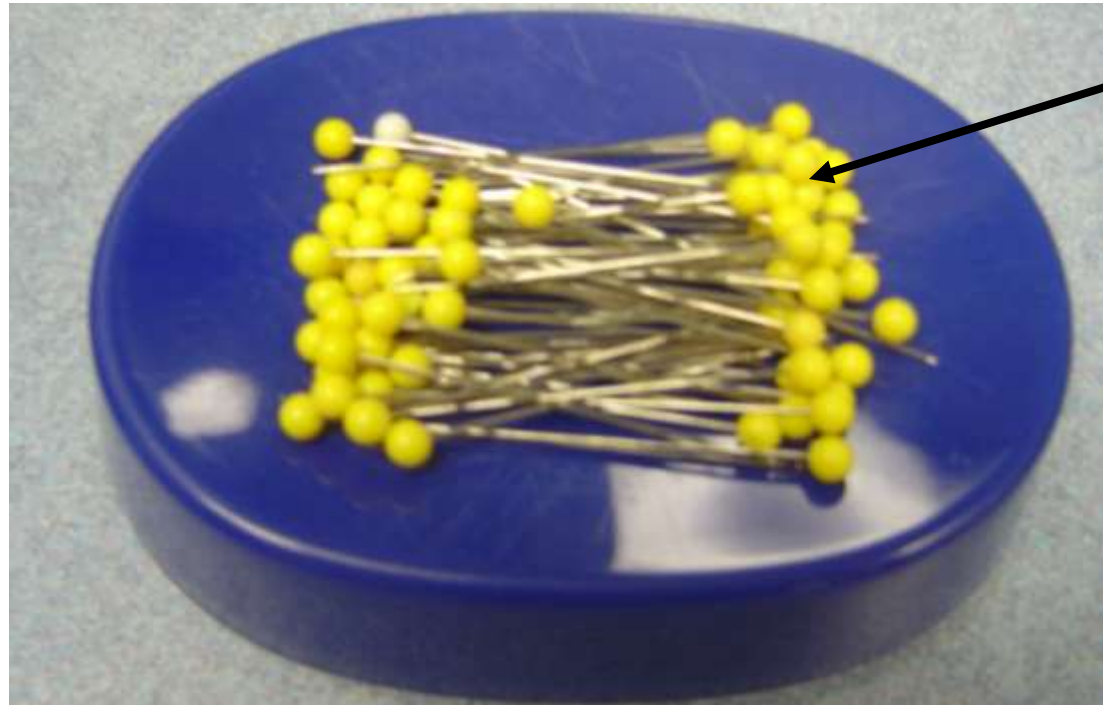
- Used for hand sewing
- Come in many sizes and types
- Keep on a separate magnetic holder from the pins!!!



Sewing Tools

■ Pins

- Used to hold fabric together before sewing
- Take the pins out as you sew



Sewing Tools

- Thimble

- Protects your finger while sewing by hand



Sewing Tools

- Magnetic Pin Holder/Pin cushion
 - Store pins



Sewing Tools

■ Thread

- Comes in a variety of colors
- Match the thread color to the color of your fabric



Sewing Tools

■ Bobbin

- Empty spindle for thread
- Your thread color needs to match your bobbin color

