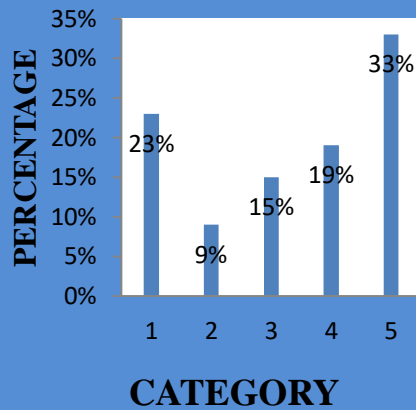


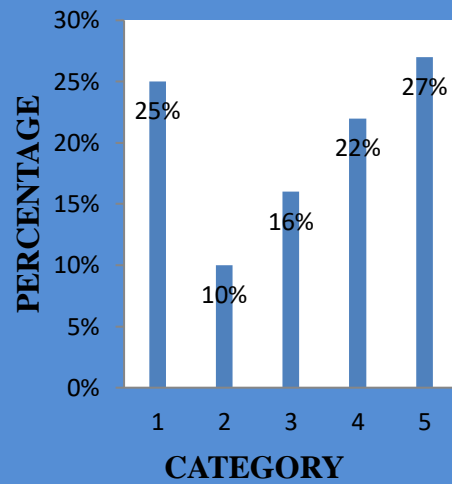
N. M. S. SERMATHAI VASAN COLLEGE FOR WOMEN – MADURAI.
STUDENTS' FEED BACK ANALYSIS 2022-2023

| A. | COURSE CONTENT: | 1 | % | 2 | % | 3 | % | 4 | % | 5 | % |
|-----------|--|----------|----------|----------|----------|----------|----------|----------|----------|----------|----------|
| 1 | The teacher covers the entire syllabus | 94 | 23% | 36 | 9% | 60 | 15% | 74 | 19% | 128 | 33% |
| 2 | The teacher discusses topics in detail | 99 | 25% | 41 | 10% | 63 | 16% | 84 | 22% | 105 | 27% |
| 3 | The teacher possesses deep knowledge of the subject taught | 96 | 24% | 48 | 12% | 59 | 16% | 96 | 24% | 93 | 24% |
| 4 | The teacher communicates clearly | 95 | 24% | 51 | 13% | 54 | 14% | 85 | 22% | 107 | 27% |
| 5 | The teacher inspires me by her knowledge in the subject | 97 | 25% | 42 | 11% | 63 | 16% | 76 | 19% | 114 | 29% |

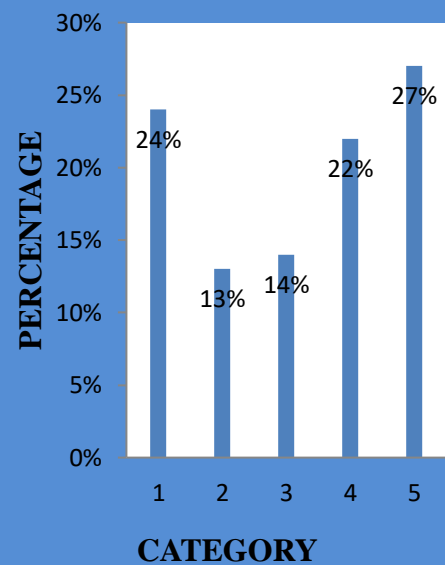
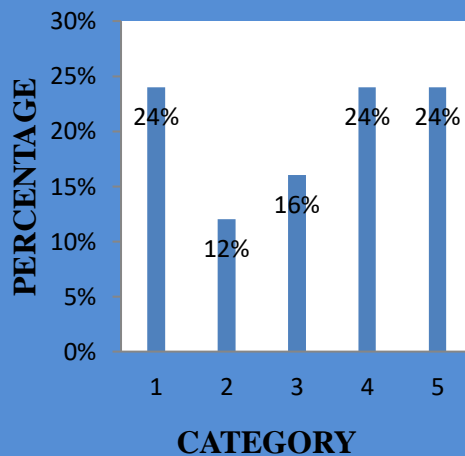
1.The teacher covers the entire syllabus



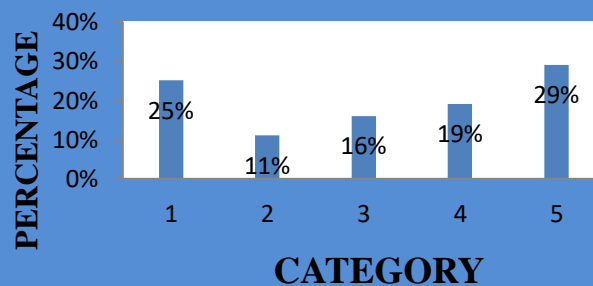
2.The teacher discusses topics in detail



3.The teacher possesses deep knowledge of the subject taught

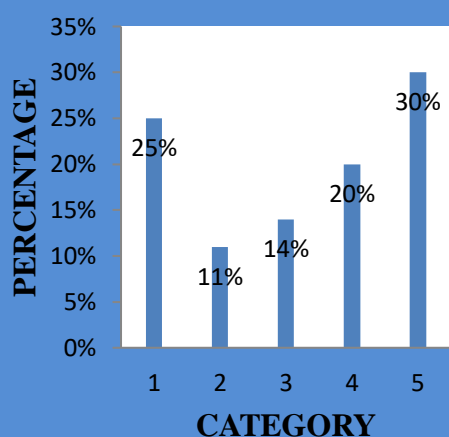


5.The teacher inspires me by her knowledge in the subject

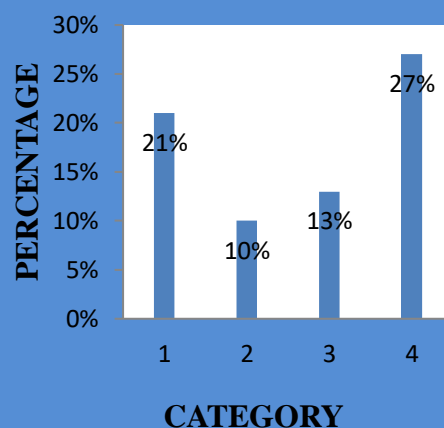


| B. | TEACHING – LEARNING PROCESS: | 1 | % | 2 | % | 3 | % | 4 | % | 5 | % |
|------|---|-----|-----|----|-----|----|-----|-----|-----|-----|-----|
| 6. | The teacher is punctual to the class | 99 | 25% | 42 | 11% | 54 | 14% | 78 | 20% | 119 | 30% |
| 7. | The teacher engages the class for the full duration and completes the course in time | 85 | 21% | 40 | 10% | 51 | 13% | 104 | 27% | 112 | 29% |
| 8. | The teacher comes fully prepared for the class | 91 | 23% | 53 | 14% | 59 | 15% | 90 | 23% | 99 | 25% |
| 9. | The teacher comes fully prepared for the class The teacher comes fully prepared for the class. | 115 | 29% | 48 | 12% | 50 | 13% | 76 | 20% | 103 | 26% |
| 10 . | The teacher encourages participation and discussion in class. (Teacher – Student, Student – Student) | 124 | 32% | 38 | 10% | 39 | 9% | 66 | 17% | 125 | 32% |
| 11 . | The teacher encourages and values disagreement | 110 | 28% | 47 | 12% | 60 | 15% | 86 | 22% | 89 | 23% |
| 12 . | The teacher uses modern teaching aids/gadgets, handouts, suggestion of references, PPT, web sources (Any other) | 85 | 22% | 53 | 13% | 62 | 16% | 91 | 23% | 101 | 26% |
| 13 . | The teacher pays attention to academically weaker students as well. | 95 | 24% | 44 | 11% | 69 | 18% | 91 | 23% | 93 | 24% |
| 14 . | The teacher relates the course material with real world situations | 103 | 26% | 48 | 12% | 56 | 16% | 92 | 23% | 93 | 23% |
| 15 . | The teacher's attitude toward the students was friendly and helpful | 114 | 29% | 44 | 11% | 60 | 15% | 65 | 17% | 109 | 28% |

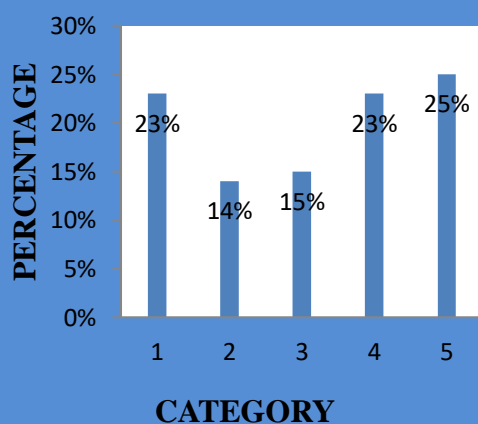
6.The teacher is punctual to the class



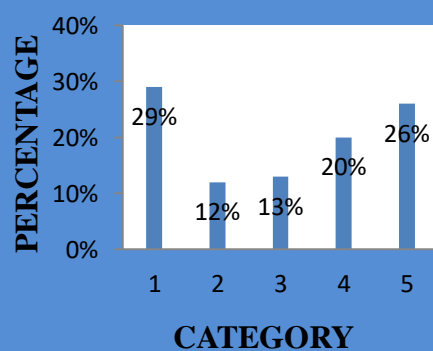
The teacher engages the class for the full duration and completes the course in time



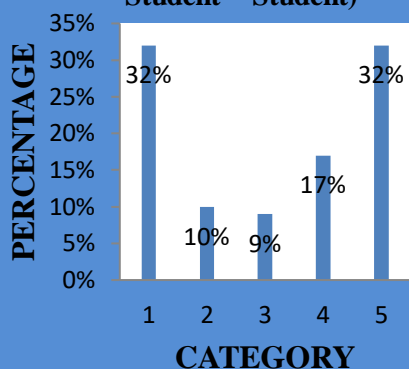
8.The teacher comes fully prepared for the class



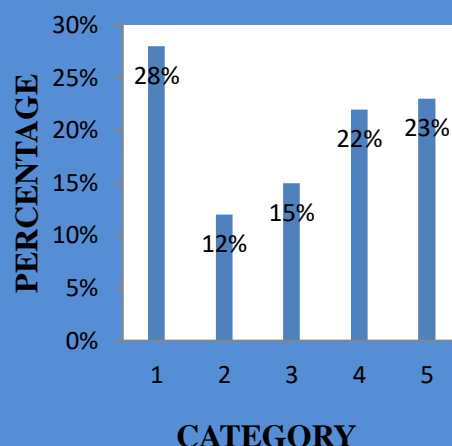
9.The teacher comes fully prepared for the class The teacher comes fully prepared for the class



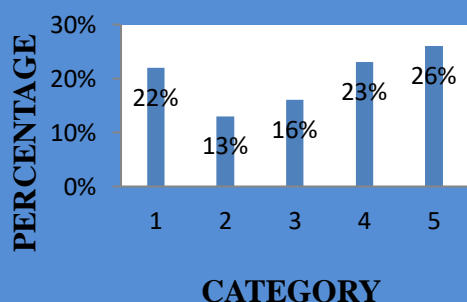
10.The teacher encourages participation and discussion in class. (Teacher – Student, Student – Student)



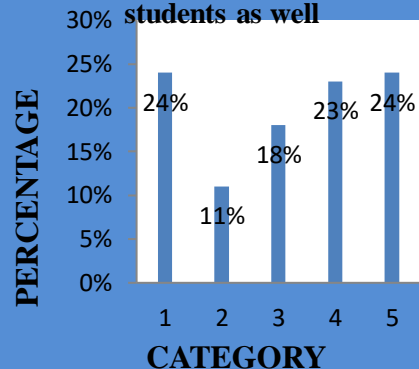
11.The teacher encourages and values disagreement



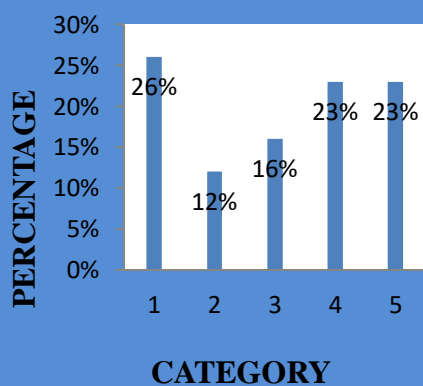
12.The teacher uses modern teaching aids/gadgets, handouts, suggestion of references, PPT, web sources (Any other)



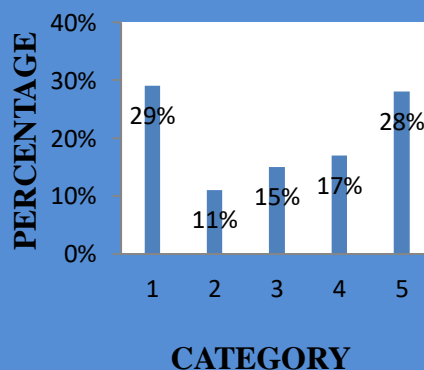
13.The teacher pays attention to academically weaker students as well



14.The teacher relates the course material with real world situations

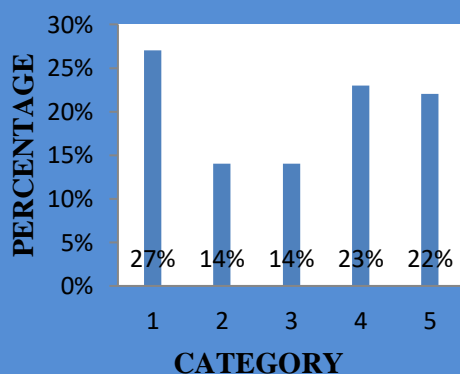


15.The teacher's attitude toward the students was friendly and helpful

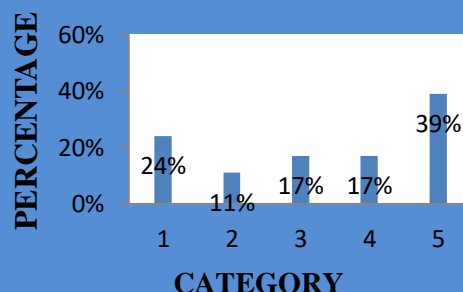


| C. | EVALUATION PROCESS | 1 | % | 2 | % | 3 | % | 4 | % | 5 | % |
|----|---|-----|-----|----|-----|----|-----|----|-----|-----|-----|
| 16 | Periodical assessments were conducted as per schedule | 104 | 27% | 56 | 14% | 56 | 14% | 90 | 23% | 86 | 22% |
| 17 | The teacher uses non-traditional methods of evaluation like Quiz, Seminars, Assignment, Class room presentation/participation (any other) | 96 | 24% | 44 | 11% | 64 | 17% | 67 | 17% | 121 | 39% |
| 18 | Question paper covers all the topics in the Curriculum | 104 | 27% | 60 | 15% | 42 | 11% | 72 | 18% | 114 | 29% |
| 19 | The teacher was fair and unbiased in the evaluation process | 98 | 25% | 51 | 13% | 54 | 14% | 96 | 24% | 93 | 24% |

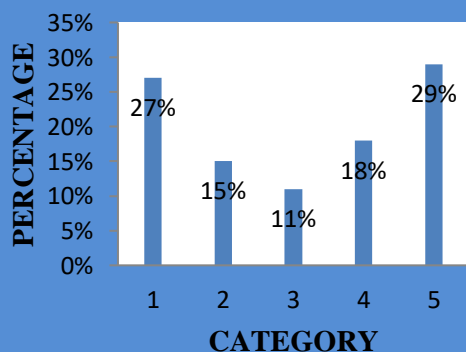
16.Periodical assessments were conducted as per schedule



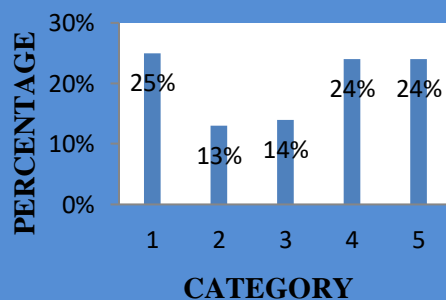
17.The teacher uses non-traditional methods of evaluation like Quiz, Seminars, Assignment, Class room presentation/participation (any other)



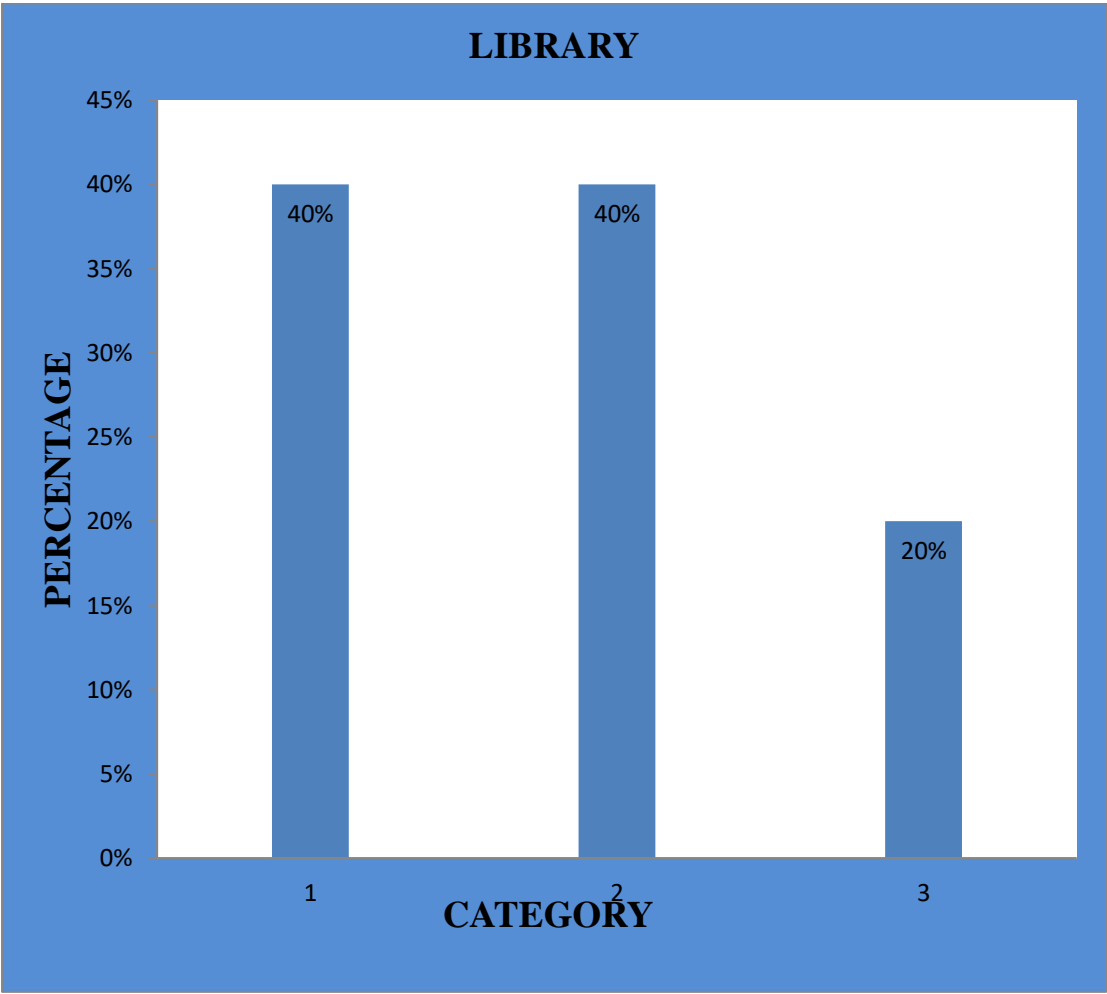
18.Question paper covers all the topics in the Curriculum



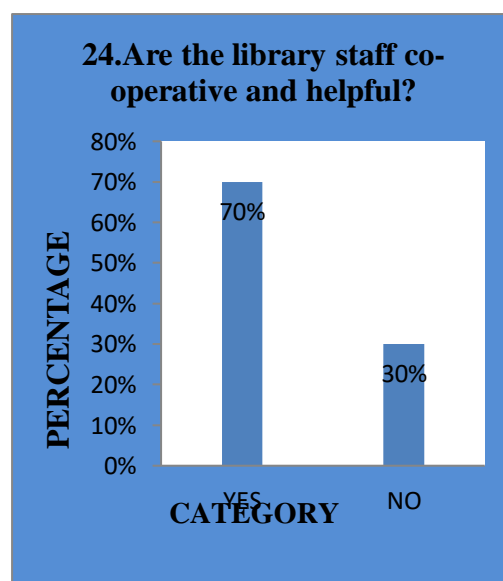
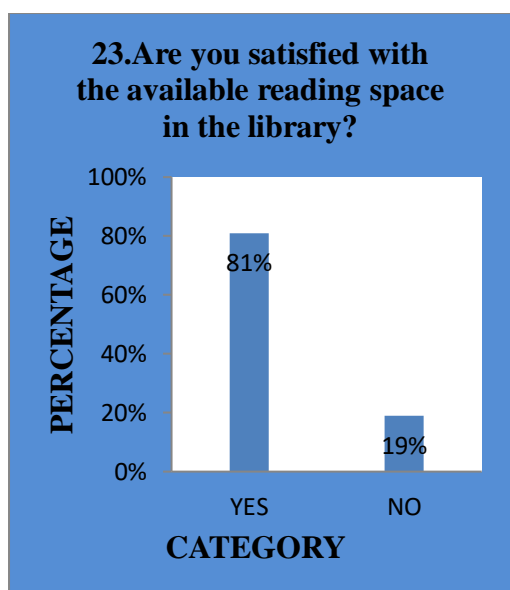
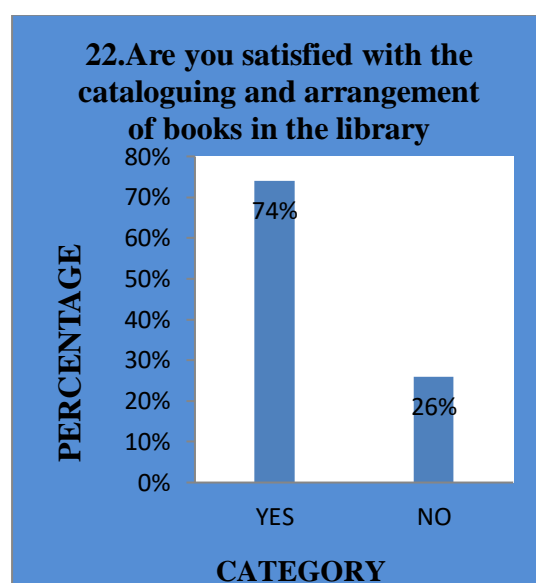
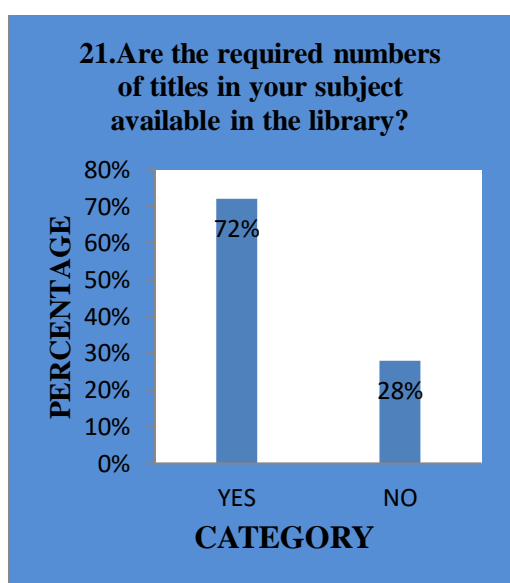
19.The teacher was fair and unbiased in the evaluation process



| D. | LIBRARY | REGULAR | % | OCCASIONALY | % | NEVER | % |
|-----|-------------------------------------|---------|-----|-------------|-----|-------|-----|
| 20. | How often do you visit the library? | 156 | 40% | 156 | 40% | 80 | 20% |



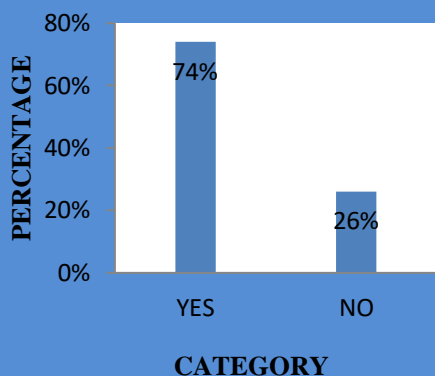
| S.No | LIBRARY | YES | % | NO | % |
|------|---|-----|-----|-----|-----|
| 21 | Are the required numbers of titles in your subject available in the library? | 282 | 72% | 110 | 28% |
| 22 | Are you satisfied with the cataloguing and arrangement of books in the library? | 289 | 74% | 103 | 26% |
| 23 | Are you satisfied with the available reading space in the library? | 316 | 81% | 76 | 19% |
| 24 | Are the library staff co-operative and helpful? | 259 | 70% | 133 | 30% |



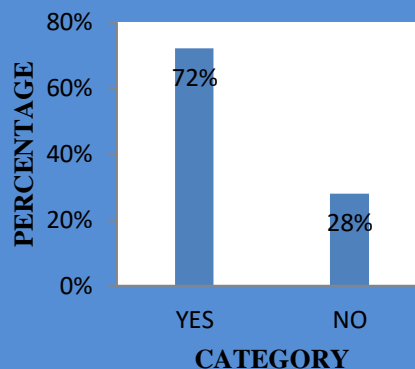
E. ADMINISTRATION:

| S.NO | ADMINISTRATION | YES | % | NO | % |
|------|---|-----|-----|-----|-----|
| 25. | Is the office helpful in administrative matters? | 291 | 74% | 101 | 26% |
| 26 | Do you receive the mark statements in time | 284 | 72% | 108 | 28% |
| 27 | Are there enough clean class rooms available in the department | 269 | 69% | 123 | 31% |
| 28 | Are the toilets cleaned properly | 264 | 67% | 128 | 33% |
| 29 | Are you provided with enough drinking water | 257 | 66% | 135 | 34% |
| 30 | Are you happy with the eatables/ food served in the present canteen | 219 | 56% | 173 | 44% |
| 31 | Is there a student amenity centre (canteen) in your campus | 232 | 59% | 160 | 41% |
| 32 | Do you think that your grievances are redressed when complain/ suggestion box is used | 239 | 61% | 153 | 39% |
| 33 | Are you aware of the functioning of a placement cell in our College | 277 | 71% | 115 | 29% |
| 34. | Are the lab equipments is in proper working conditions | 228 | 58% | 165 | 42% |
| 35. | Are you provided with adequate equipments/systems for carrying out lab activities | 228 | 58% | 165 | 42% |
| 36. | Are you aware of the “earn while you learn” scheme in our college | 252 | 64% | 140 | 36% |
| 37. | Do you avail any scholarship from the college/ govt./ etc. | 224 | 57% | 168 | 43% |
| 38. | Are you a beneficiary of any Fee Concession of our college If yes, given details | 208 | 53% | 184 | 47% |

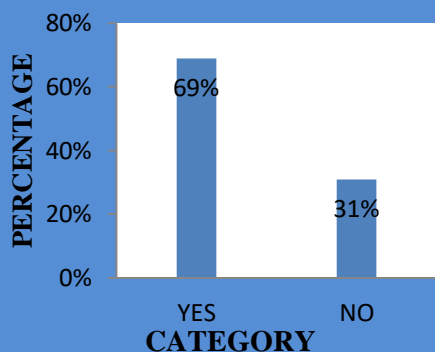
25.Is the office helpful in administrative matters?



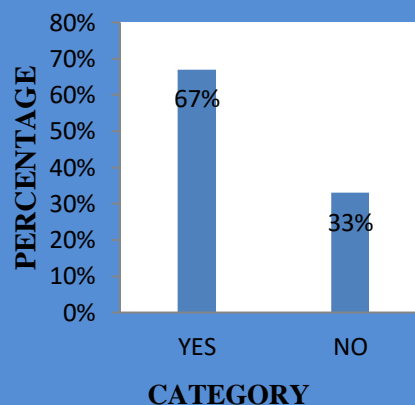
26.Do you receive the mark statements in time



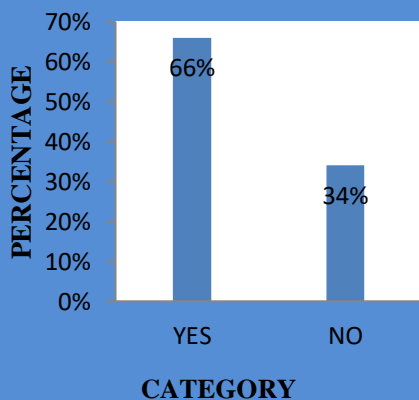
27.Are there enough clean class rooms available in the department



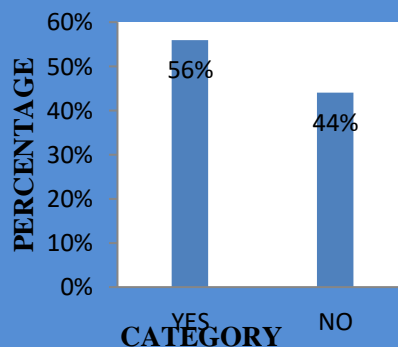
28.Are the toilets cleaned properly



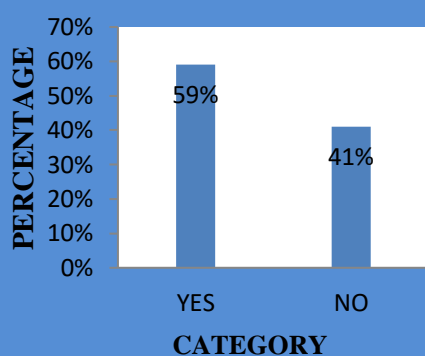
29.Are you provided with enough drinking water



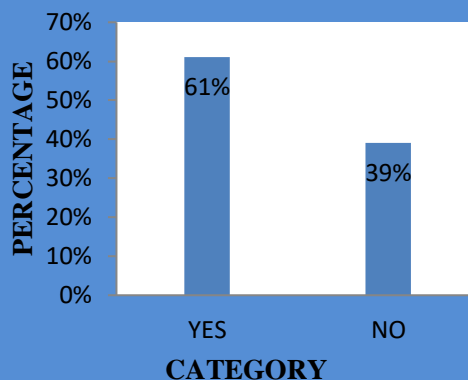
30.Are you happy with the eatables/ food served in the present canteen



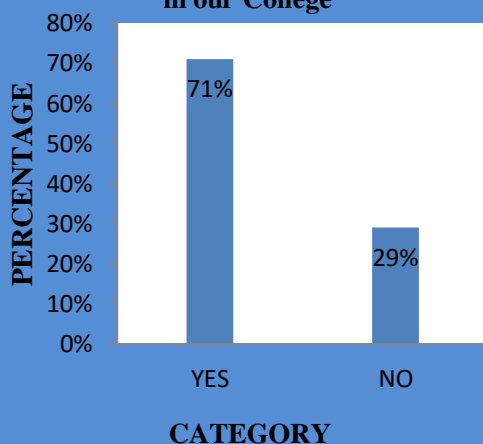
31.Is there a student amenity centre (canteen) in your campus



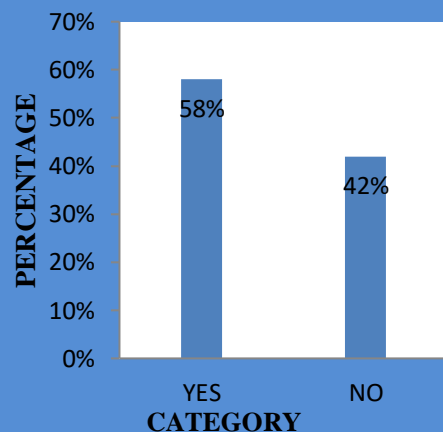
32.Do you think that your grievances are redressed when complain/ suggestion box is used



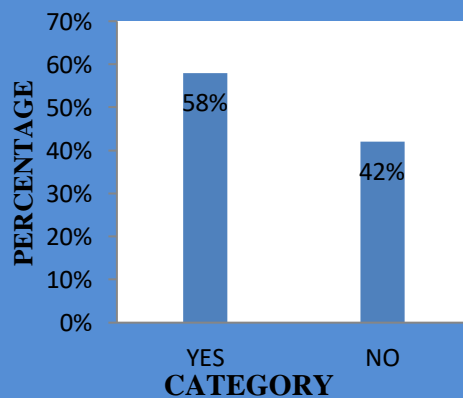
33.Are you aware of the functioning of a placement cell in our College



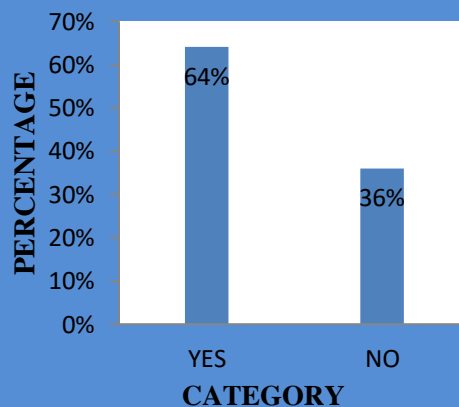
34.Are the lab equipments is in proper working conditions



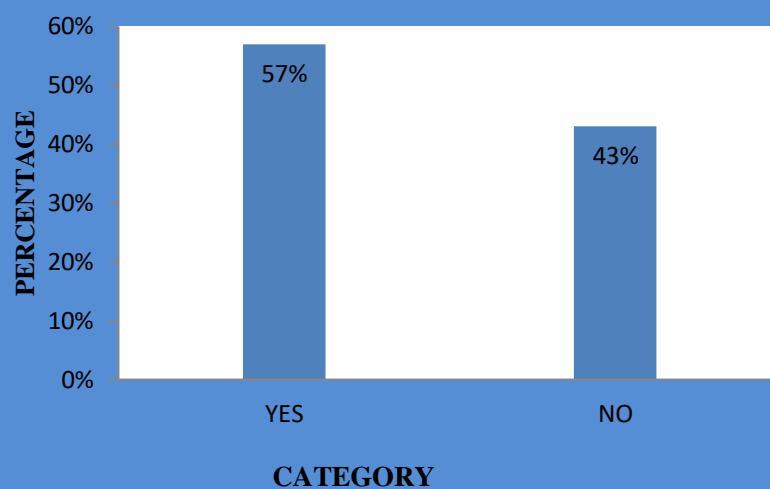
35.Are you provided with adequate equipments/systems for carrying out lab activities



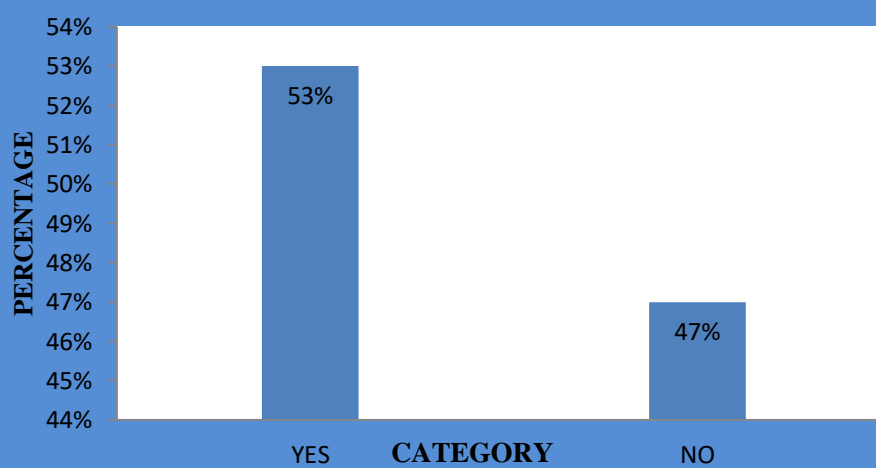
36.Are you aware of the “earn while you learn” scheme in our college



37.Do you avail any scholarship from the college/ govt./ etc.



**38.Are you a beneficiary of any Fee Concession of our college
If yes, given details**




PRINCIPAL

Mrs.M.KAVITHA M.Sc.M.Phi.,B.Ed., Ph.D