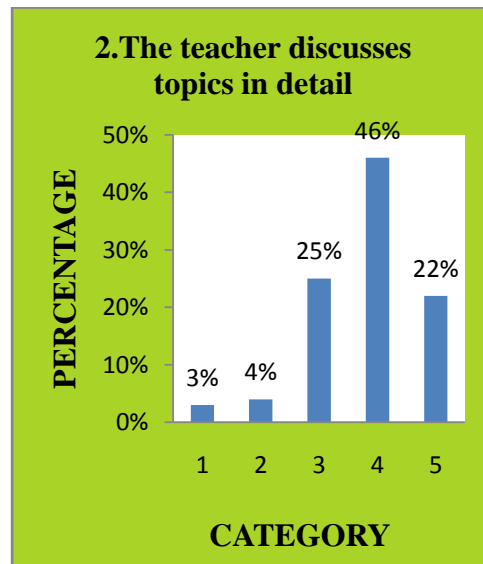
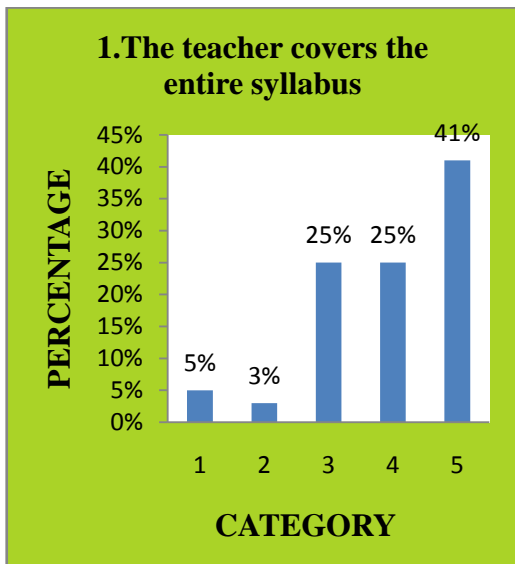




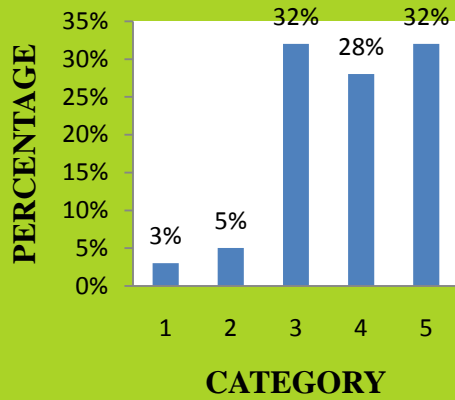
**NADAR MAHAJANA SANGAM**  
**SERMATHAI VASAN COLLEGE FOR WOMEN – MADURAI.**  
**STUDENTS' FEED BACK ANALYSIS 2023-2024**



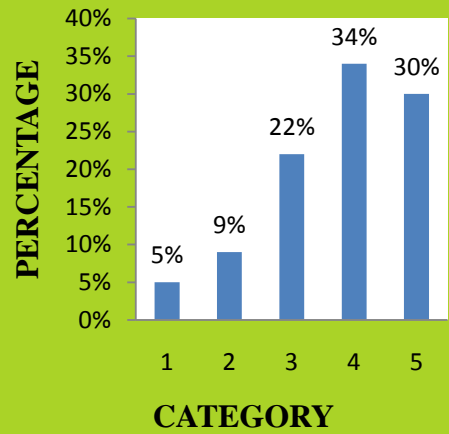
A.	COURSE CONTENT	1	%	2	%	3	%	4	%	5	%
1.	The teacher covers the entire syllabus	14	5%	10	3%	74	25%	74	25%	121	41%
2.	The teacher discusses topics in detail	9	3%	11	4%	73	25%	135	46%	65	22%
3.	The teacher possesses deep knowledge of the subject taught	8	3%	18	5%	93	32%	81	28%	93	32%
4.	The teacher communicates clearly	15	5%	27	9%	65	22%	98	34%	88	30%
5.	The teacher inspires me by her knowledge in the subject	11	4%	42	14%	77	26%	89	30%	74	26%



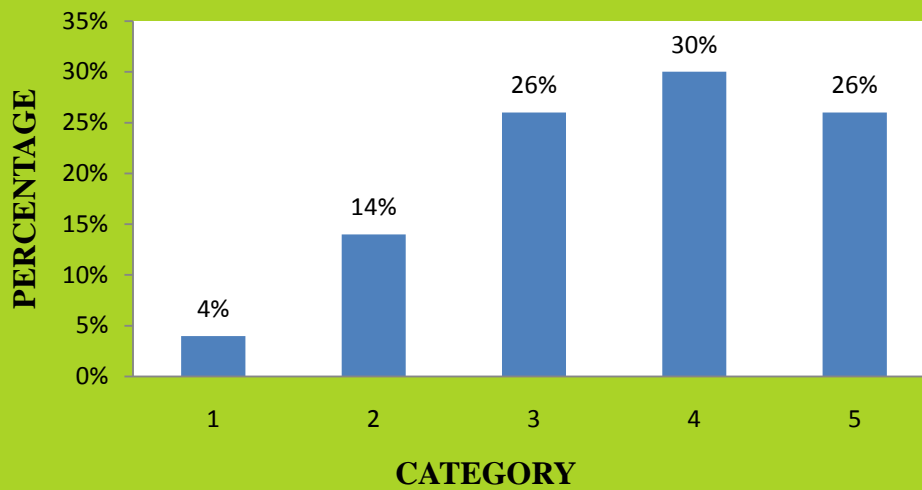
**3.The teacher possesses deep knowledge of the subject taught**



**4.The teacher communicates clearly**



**5.The teacher inspires me by her knowledge in the subject**

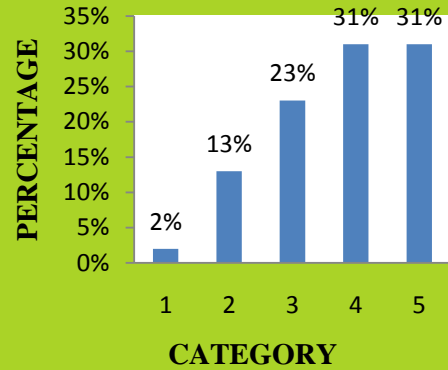


<b>B.</b>	<b>TEACHING – LEARNING PROCESS:</b>	<b>1</b>	<b>%</b>	<b>2</b>	<b>%</b>	<b>3</b>	<b>%</b>	<b>4</b>	<b>%</b>	<b>5</b>	<b>%</b>
6.	The teacher is punctual to the class	17	6%	41	14%	58	20%	63	21%	114	39%
7.	The teacher engages the class for the full duration and completes the course in time	5	2%	37	13%	68	23%	92	31%	91	31%
8.	The teacher comes fully prepared for the class	13	4%	20	7%	41	14%	112	38%	107	37%
9.	The teacher comes fully prepared for the class The teacher comes fully prepared for the class.	11	4%	57	19%	65	22%	68	23%	92	32%
10.	The teacher encourages participation and discussion in class. (Teacher – Student, Student – Student)	46	16%	31	11%	52	18%	96	33%	68	22%
11.	The teacher encourages and values disagreement	8	3%	48	16%	53	18%	97	33%	87	30%
12.	The teacher uses modern teaching aids/gadgets, handouts, suggestion of references, PPT, web sources (Any other)	15	5%	54	18%	52	18%	97	33%	75	26%
13.	The teacher pays attention to academically weaker students as well.	13	4%	47	16%	54	18%	101	34%	80	28%
14.	The teacher relates the course material with real world situations	9	3%	6	2%	43	15%	150	51%	85	29%
15.	The teacher's attitude toward the students was friendly and helpful	7	2%	25	7%	67	24%	99	35%	95	32%

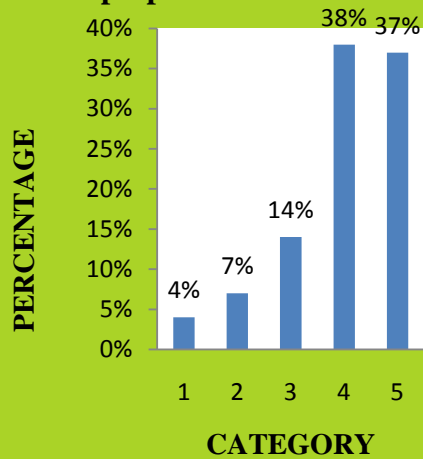
**6.The teacher is punctual to the class**



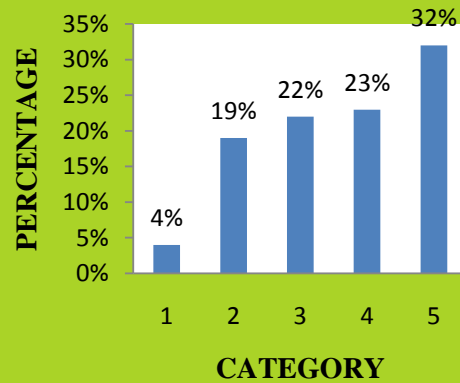
**7.The teacher engages the class for the full duration and completes the course in time**



**8.The teacher comes fully prepared for the class**



**9.The teacher comes fully prepared for the class The teacher comes fully prepared for the class.**



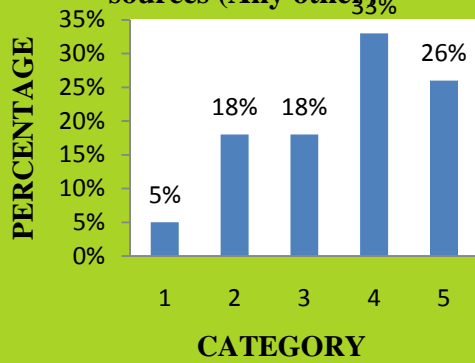
**10.The teacher encourages participation and discussion in class. (Teacher – Student, Student – Student)**



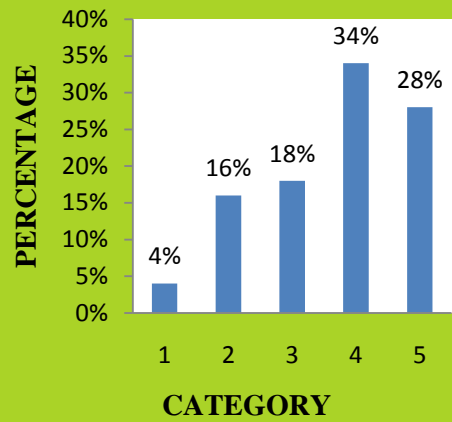
**11.The teacher encourages and values disagreement**



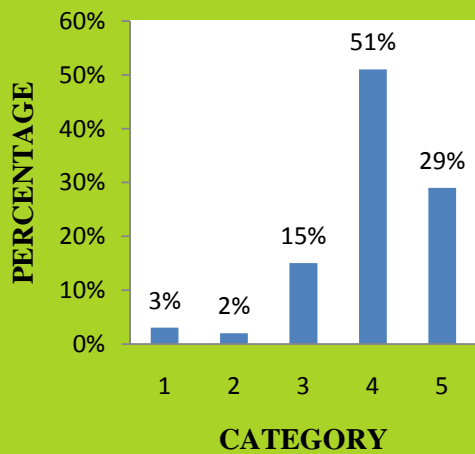
**12. The teacher uses modern teaching aids/gadgets, handouts, suggestion of references, PPT, web sources (Any other)**



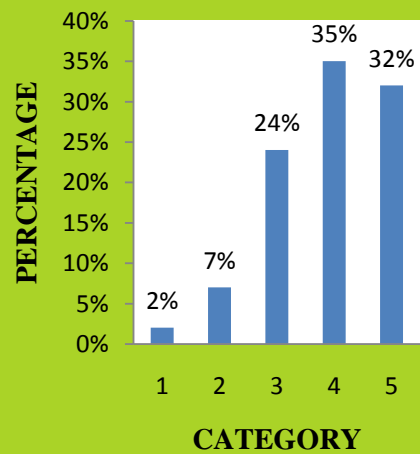
**13. The teacher pays attention to academically weaker students as well.**



**14. The teacher relates the course material with real world situations**

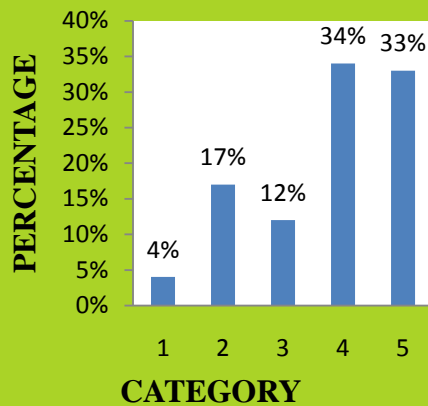


**15. The teacher's attitude toward the students was friendly and helpful**

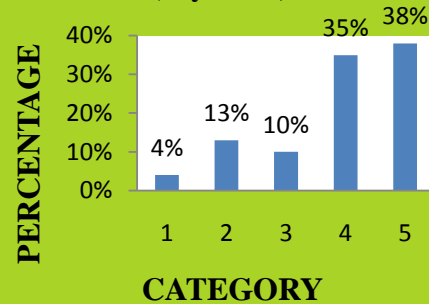


C.	EVALUATION PROCESS	1	%	2	%	3	%	4	%	5	%
16.	Periodical assessments were conducted as per schedule	11	4%	49	17%	36	12%	101	34%	96	33%
17.	The teacher uses non-traditional methods of evaluation like Quiz, Seminars, Assignment, Class room presentation/participation (any other)	11	4%	39	13%	30	10%	103	35%	110	38%
18.	Question paper covers all the topics in the Curriculum	4	1%	52	18%	26	9%	115	39%	96	33%
19.	The teacher was fair and unbiased in the evaluation process	6	2%	36	12%	64	22%	84	29%	103	35%

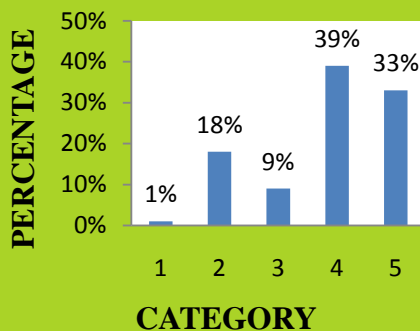
**16. Periodical assessments were conducted as per schedule**



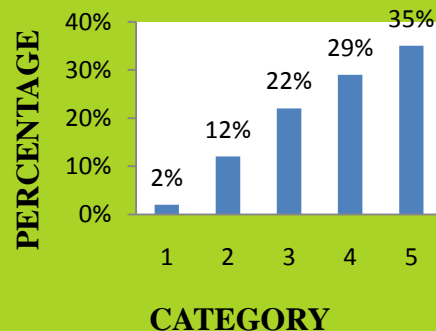
**17. The teacher uses non-traditional methods of evaluation like Quiz, Seminars, Assignment, Class room presentation/participation (any other)**



**18. Question paper covers all the topics in the Curriculum**

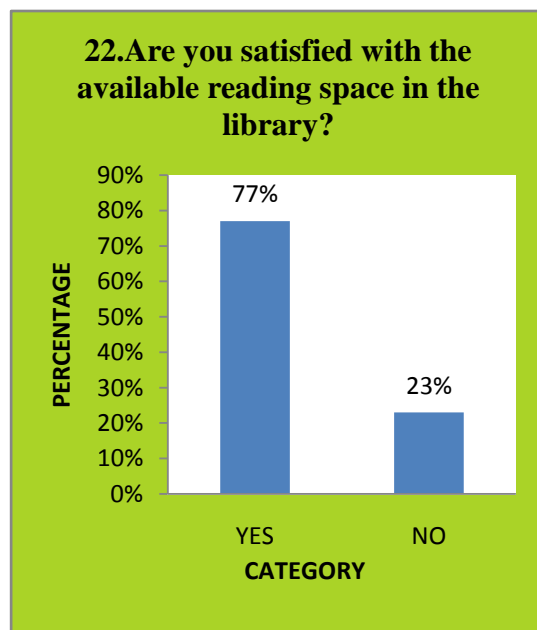
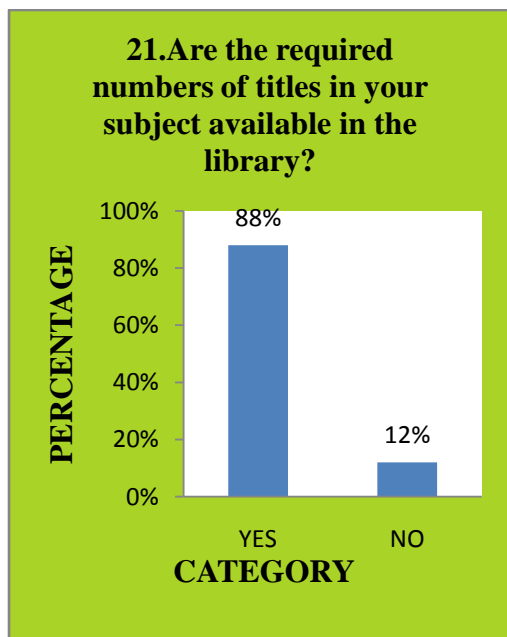


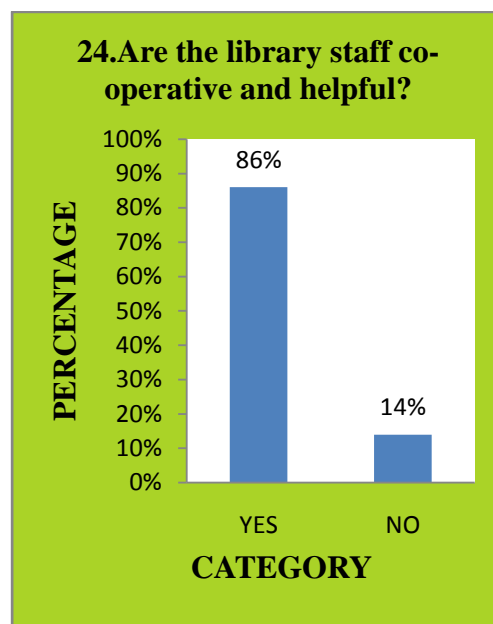
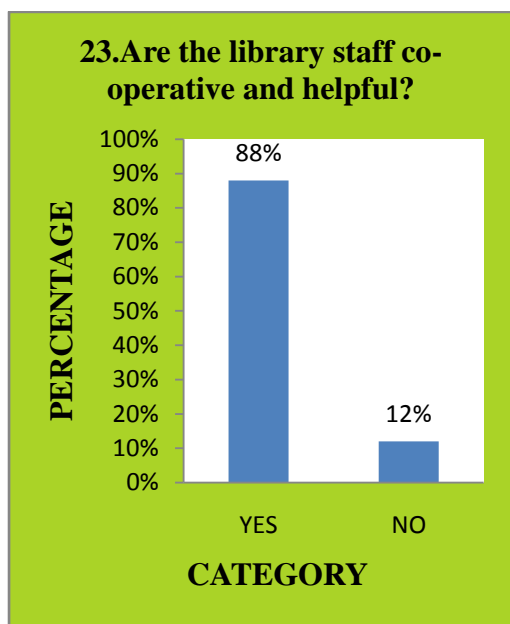
**19. The teacher was fair and unbiased in the evaluation process**



D.	LIBRARY	REGULAR	%	OCCASIONALY	%	NEVER	%
20.	How often do you visit the library?	48	16%	242	83%	3	1%

S.No	LIBRARY	YES	%	NO	%
21	Are the required numbers of titles in your subject available in the library?	257	88%	36	12%
22	Are you satisfied with the cataloguing and arrangement of books in the library?	225	77%	68	23%
23	Are you satisfied with the available reading space in the library?	257	88%	36	12%
24	Are the library staff co-operative and helpful?	251	86%	42	14%



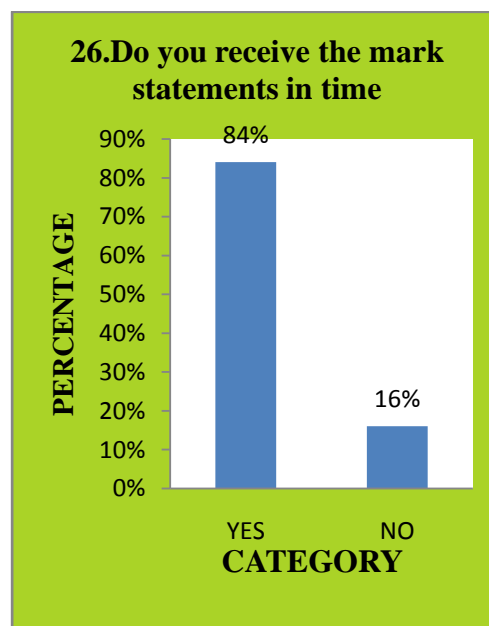
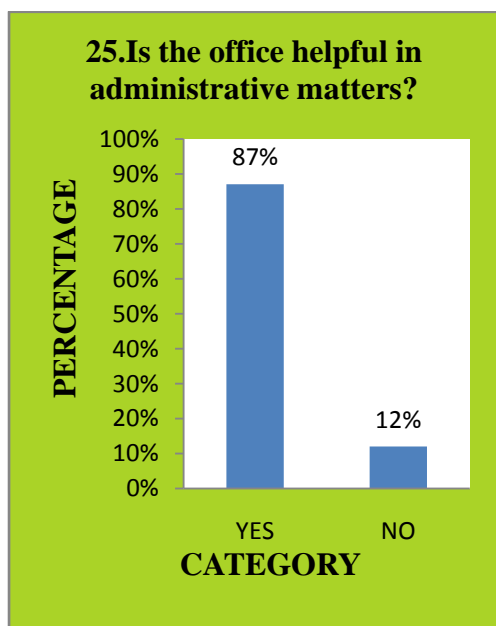


**E. ADMINISTRATION:**

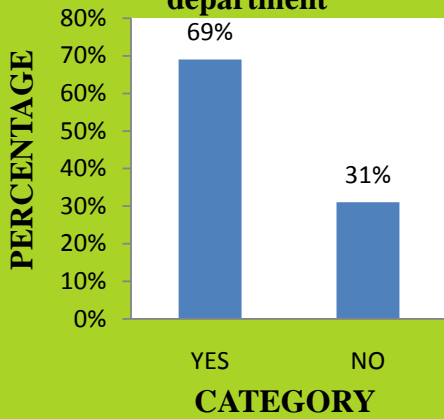
S.NO	ADMINISTRATION	YES	%	NO	%
25.	Is the office helpful in administrative matters?	255	87%	38	12%
26	Do you receive the mark statements in time	246	84%	47	16%
27	Are there enough clean class rooms available in the department	201	69%	92	31%
28	Are the toilets cleaned properly	251	86%	42	14%
29	Are you provided with enough drinking water	265	90%	28	10%
30	Are you happy with the eatables/ food served in the present canteen	253	86%	40	14%
31	Is there a student amenity centre (canteen) in your campus	202	70%	91	30%



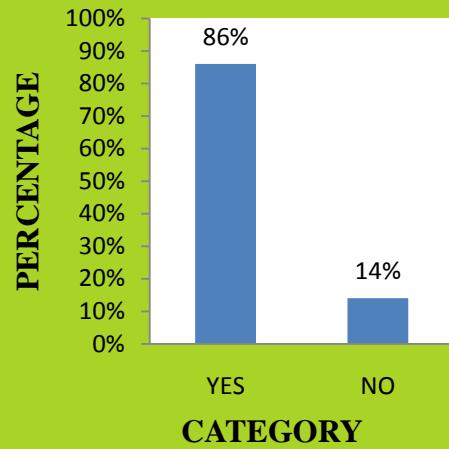
32.	Do you think that your grievances are redressed when complain/ suggestion box is used	174	59%	119	41%
33.	Are you aware of the functioning of a placement cell in our College	282	96%	11	4%
34.	Are the lab equipments is in proper working conditions	257	88%	36	12%
35.	Are you provided with adequate equipments/systems for carrying out lab activities	254	87%	39	13%
36.	Are you aware of the “earn while you learn” scheme in our college	227	77%	66	23%
37.	Do you avail any scholarship from the college/ govt./ etc.	126	43%	167	57%
38.	Are you a beneficiary of any Fee Concession of our college If yes, given details	159	54%	134	46%



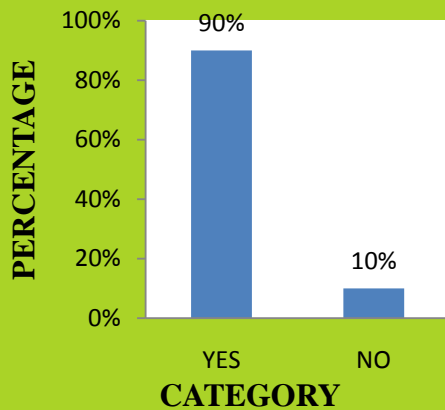
**27. Are there enough clean class rooms available in the department**



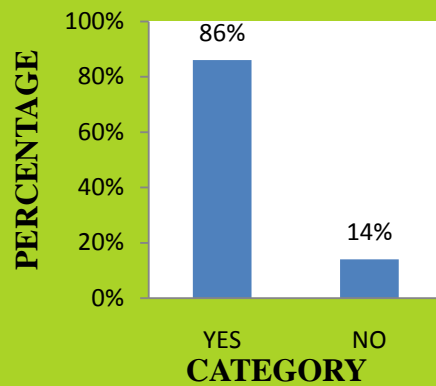
**28. Are the toilets cleaned properly**



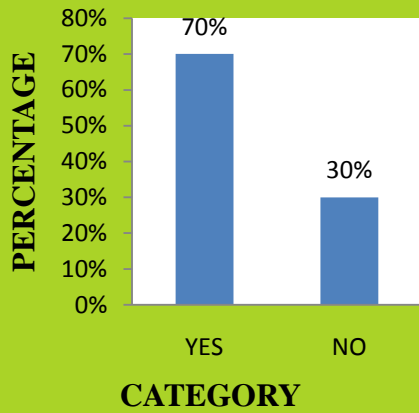
**29. Are you provided with enough drinking water**



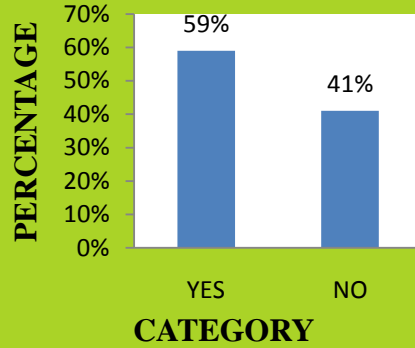
**30. Are you happy with the eatables/ food served in the present canteen**



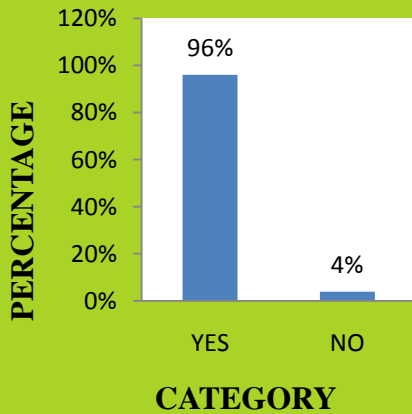
**31. Is there a student amenity centre (canteen) in your campus**



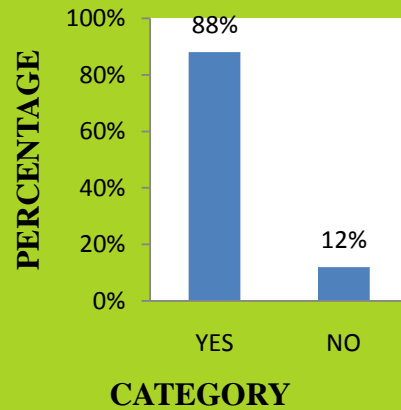
**32. Do you think that your grievances are redressed when complain/ suggestion box is used**



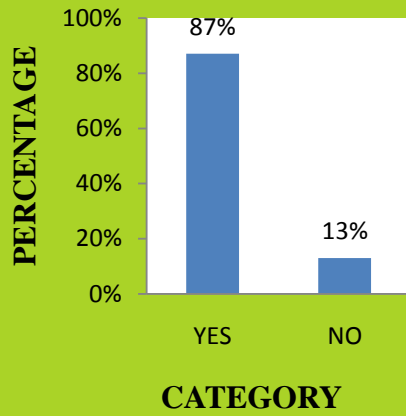
**33. Are you aware of the functioning of a placement cell in our College**



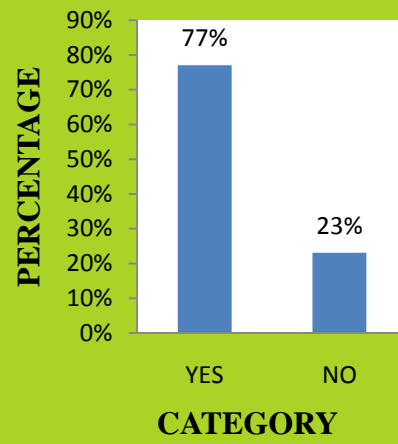
**34. Are the lab equipments in proper working conditions**



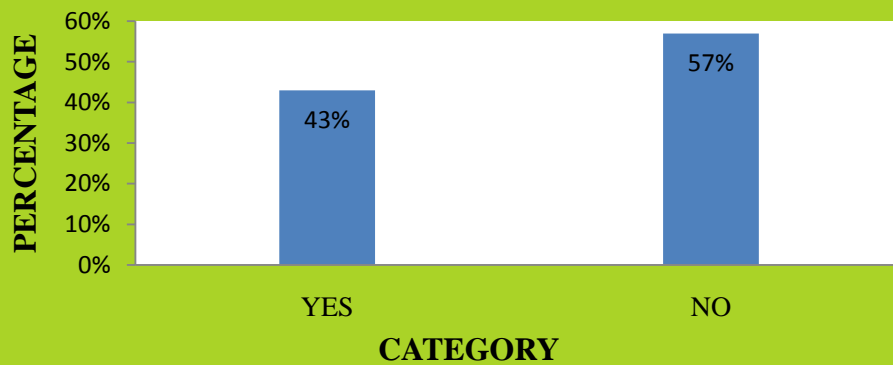
**35. Are you provided with adequate equipments/systems for carrying out lab activities**



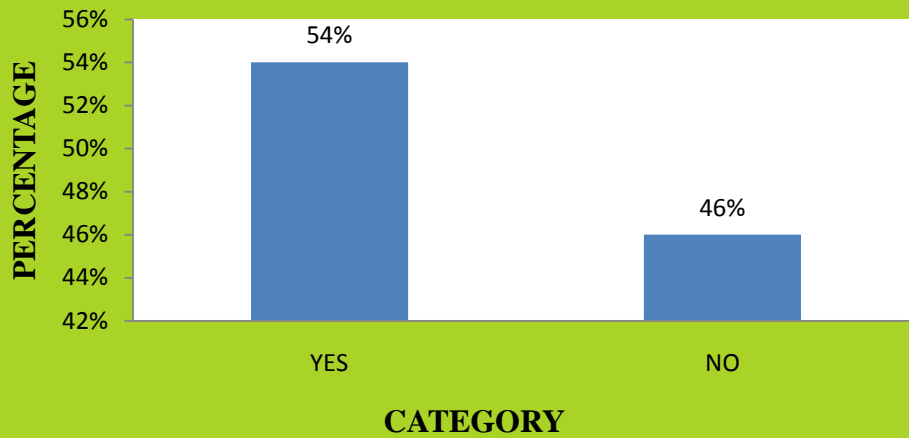
**36. Are you aware of the “earn while you learn” scheme in our college**



**37. Do you avail any scholarship from the college/ Govt./ etc.**



**38. Are you a beneficiary of any Fee Concession of our college? If yes, given details**



*Mithu*

**SIGNATURE OF THE PRINCIPAL**



# NADAR MAHAJANA SANGAM SERMATHAI VASAN COLLEGE FOR WOMEN

Self Finance Institution - Permanently Affiliated to Madurai Kamaraj University

Accredited with "B" Grade by NAAC

Periyar Nagar Road, Avaniyapuram, Madurai - 625 012.

e.mail : nmssvcollege@gmail.com, nmssvcollege@yahoo.com,

Website : www.nmssvcollege.com.

Off : 72000 61388 ★ Principal : 72000 51388 ★ Hostel : 72000 71388

NADAR MAHAJANA SANGAM, Cell : 93635 38567

## STUDENTS' FEED BACK - 2023-2024

### REPORT

The students' feedback on curriculum and teaching learning process at NMS SVC, Madurai. In this academic year 2023-2024, students' feedback is sought around from 294 students about curriculum and teaching learning process, evaluation process, library, and administration etc., Majority of the students strongly agree that the syllabus is covered by the teachers. Most of the students agreed that the laboratory experience, Infrastructure and practical exposure given to them enhanced their understanding of the concepts. They have also acknowledged that teachers observe the students at personal level, identify the strengths and weaknesses of the students. Every year feedbacks are collected and analyzed.

#### RECOMMENDED:

- Need mobile phone for their Education Development.

#### ACTION TAKEN:

Till 2022, we did not allow the students to bring their phone. From June 2023, onwards permission is granted to bring their mobile phones with the knowledge of their parents under certain restrictions with the guidance of management, principal.

PRINCIPAL