



NADAR MAHAJANA SANGAM

SERMATHAI VASAN COLLEGE FOR WOMEN

(Permanently affiliated to Madurai Kamaraj University)

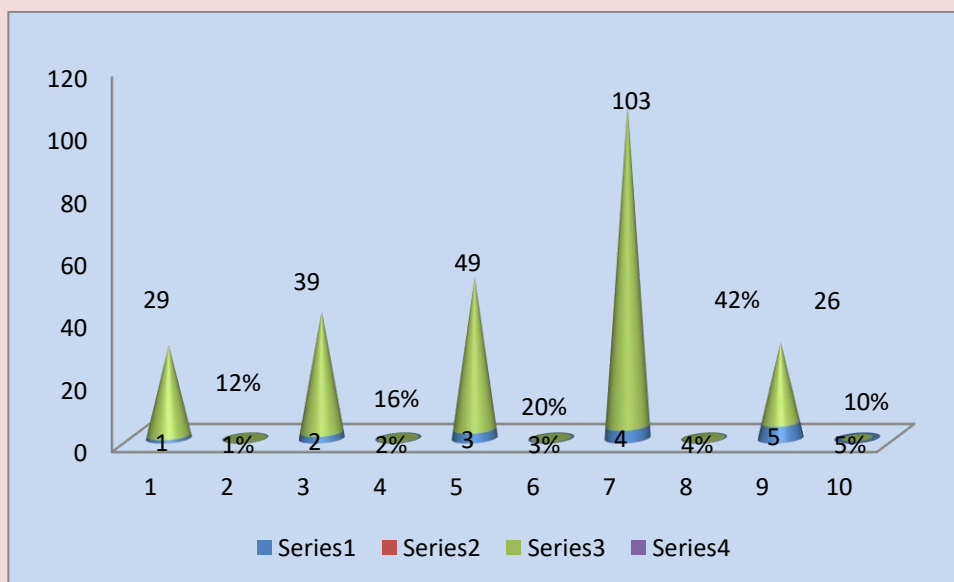
Accredited with 'B' Grade by NAAC

Avaniyapuram, Madurai - 12.

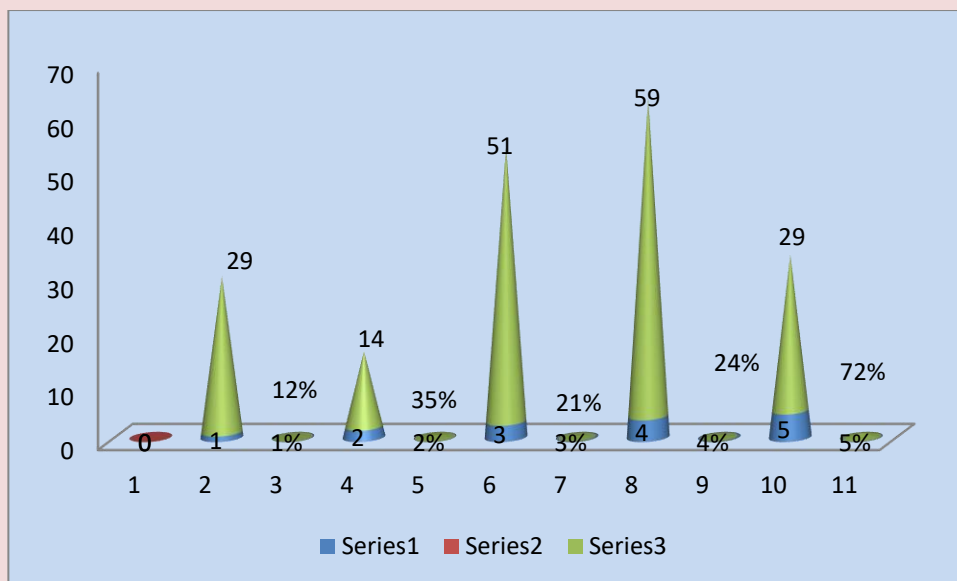
STUDENTS' FEED BACK 2025-2026



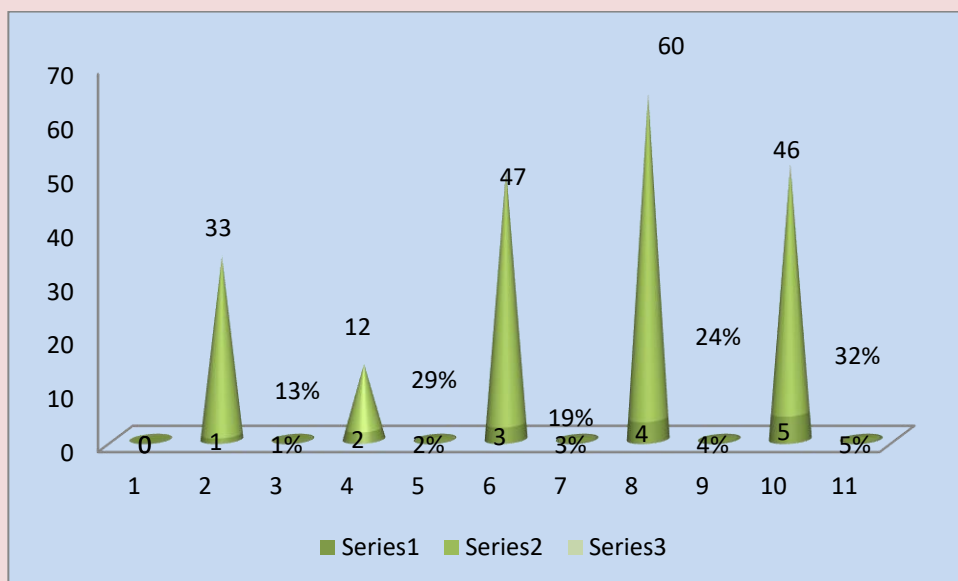
A.	COURSECONTENT	1	1%	2	2%	3	3%	4	4%	5	5%
1.	The teacher covers the entire syllabus	29	12%	39	16%	49	20%	103	42%	26	10%
2.	The teacher discusses topics in detail	29	12%	14	35%	51	21%	59	24%	29	72%
3.	The teacher communicates clearly	33	13%	12	29%	47	19%	60	24%	46	32%



1. The teacher covers the entire syllabus

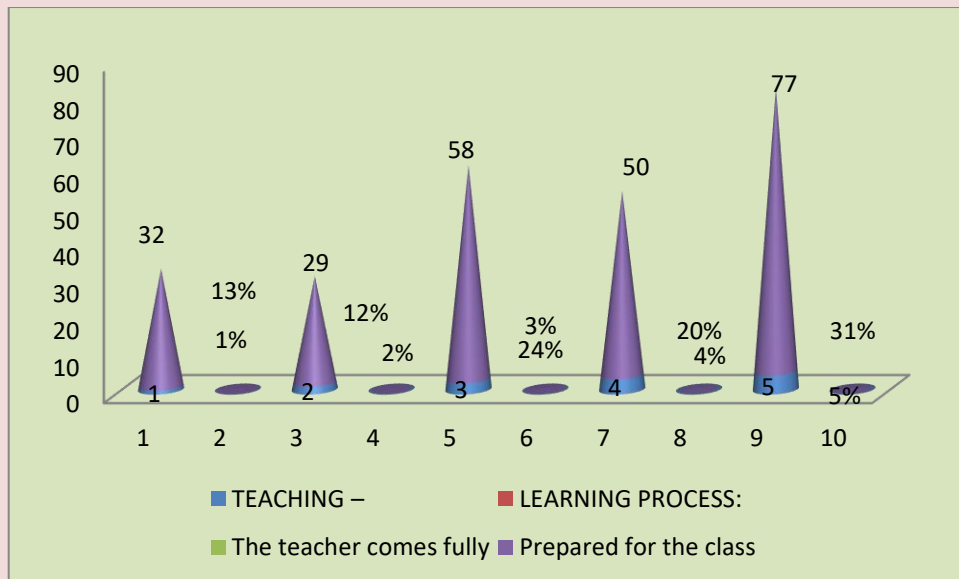


2. The teacher discusses topics in detail

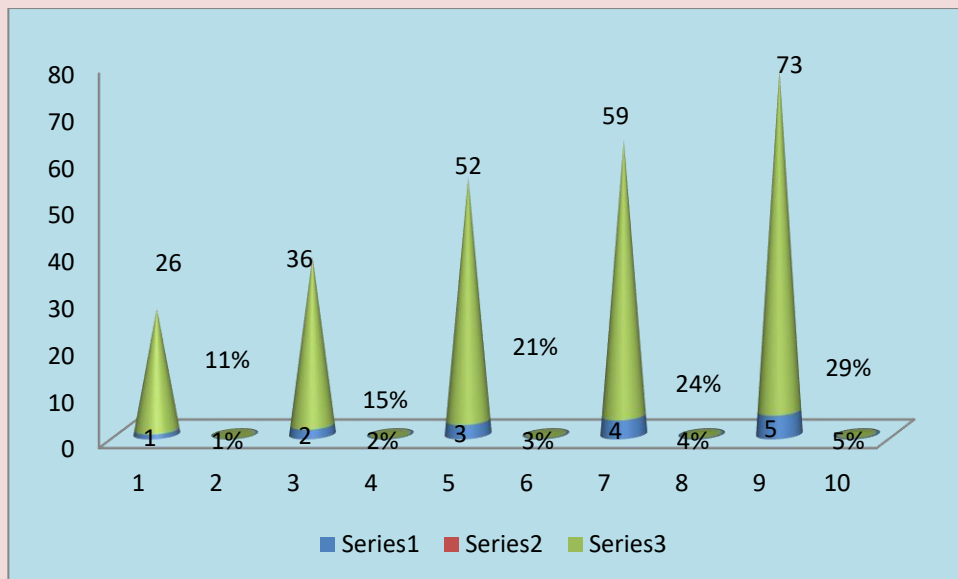


3. The teacher communicates clearly

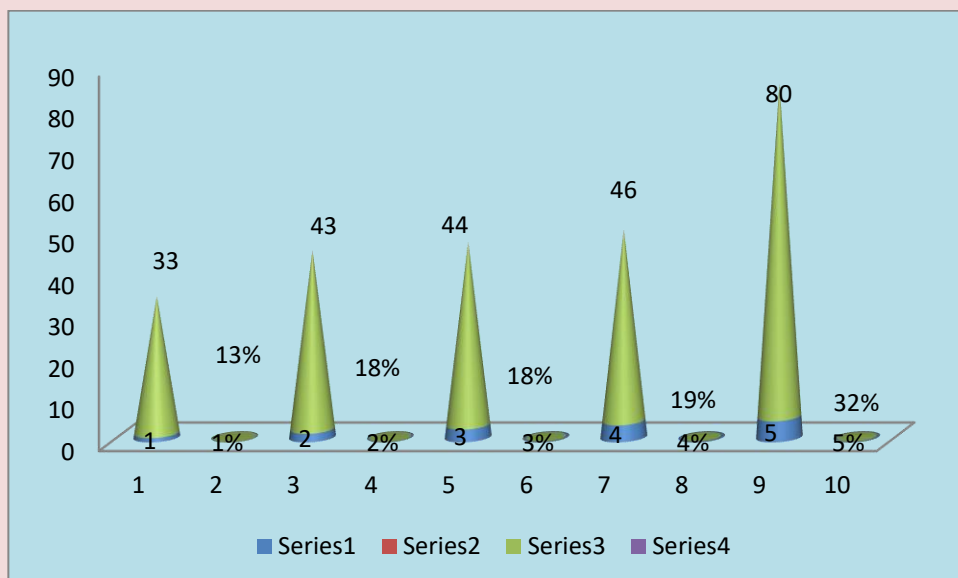
B.	TEACHING – LEARNING PROCESS:	1	1%	2	2%	3	3%	4	4%	5	5%
4	The teacher comes fully Prepared for the class	32	13%	29	12%	58	24%	50	20%	77	31%
5	The teacher provides guidance counseling in academic and non-academic matters in/outside the class.	26	11%	36	15%	52	21%	59	24%	73	29%
6	The teacher uses modern teaching aids/gadgets,handouts, suggestion of references, PPT, web sources (Anyother)	33	13%	43	18%	44	18%	46	19%	80	32%



4. The Teacher Comes fully prepared for the class

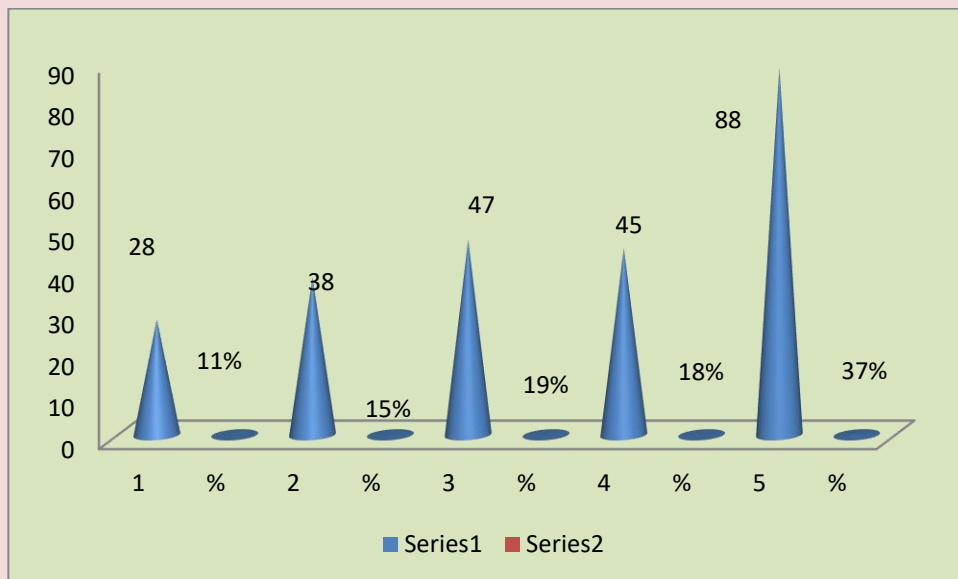


5. The teacher provides guidance counseling in academic and non-academic matters in/outside the class.

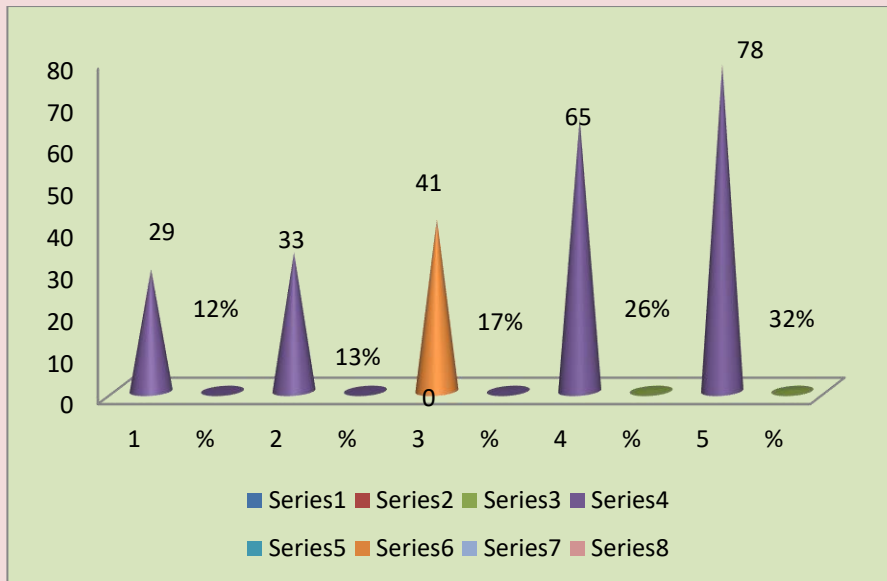


6. The teacher uses modern teaching aids/gadgets, handouts, suggestion of references, PPT , web sources (Any other)

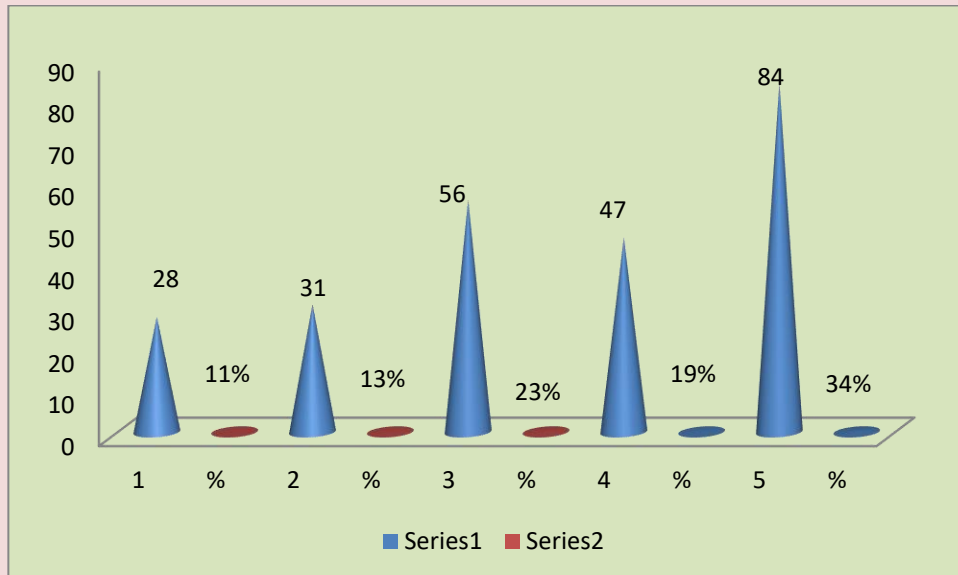
C.	EVALUATION PROCESS	1	%	2	%	3	%	4	%	5	%
7.	Periodical assessments were conducted as per schedule	28	11%	38	15%	47	19%	45	18%	88	37%
8.	The teacher uses non-traditional methods of evaluation like Quiz, Seminars, Assignment, Class room presentation /participation (any other)	29	12%	33	13%	<b>41</b>	17%	65	26%	78	32%
9.	The teacher was fair and unbiased in the evaluation process	28	11%	31	13%	56	23%	47	19%	84	34%



7. Periodical assessments were conducted as per schedule

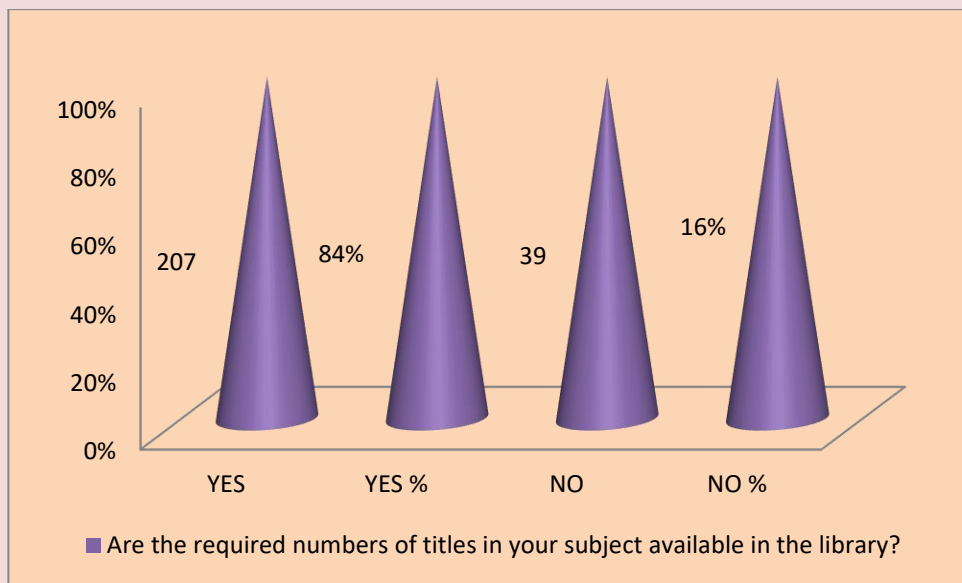


8. The teacher uses non- traditional methods of evaluation like Quiz, Seminars, Assignment, Class room presentation /participation (any other)

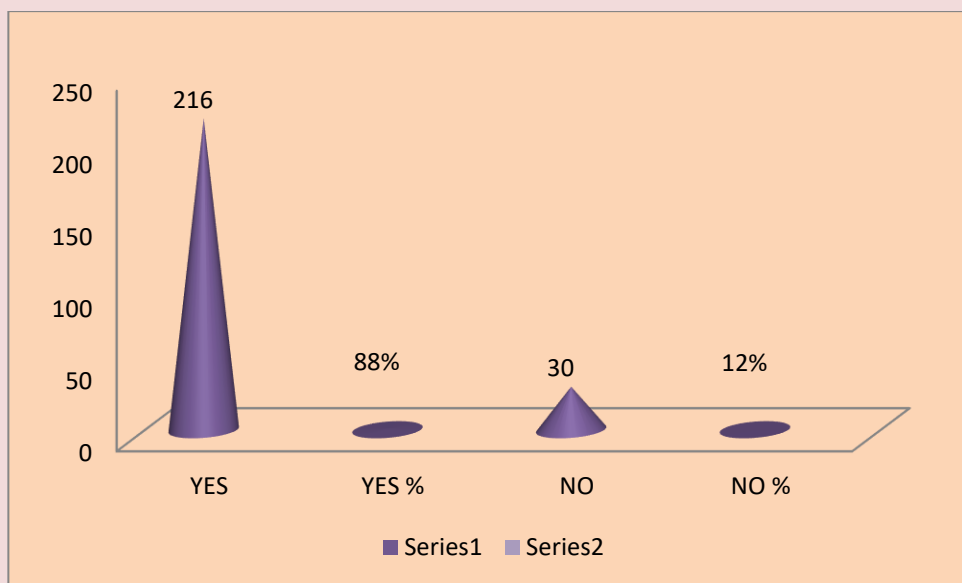


9. The teacher was fair and unbiased in the evaluation process

SL.NO	LIBRARY	YES	YES %	NO	NO %
10	Are the required numbers of titles in your subject available in the library?	207	84%	39	16%
11	Are the library staff co-operative and helpful?	216	88%	30	12%

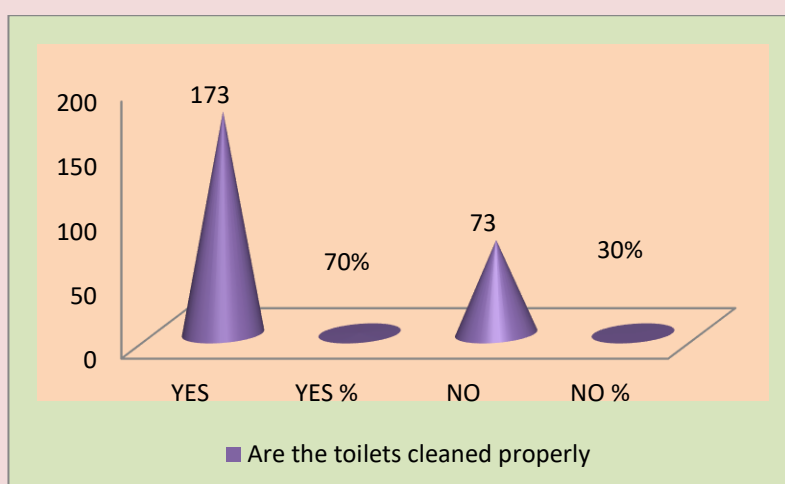


10. Are the required numbers of titles in your subject available in the library?

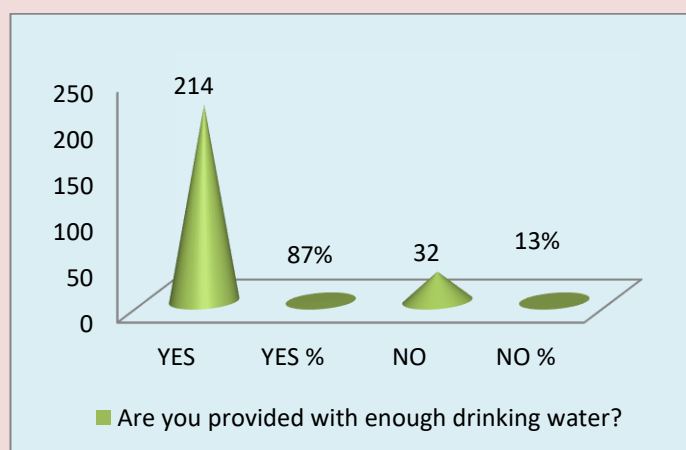


11. Are the library staff co-operative and helpful

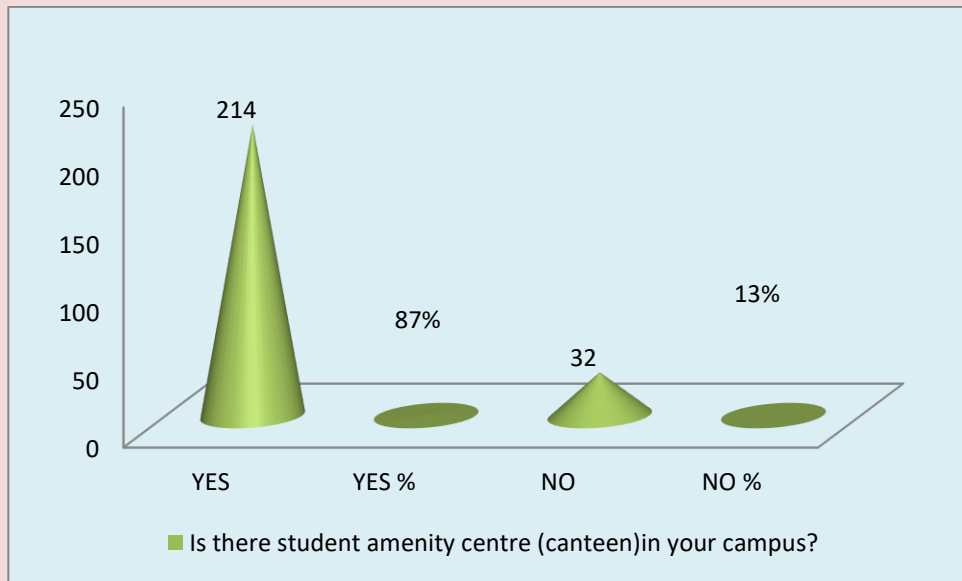
S.NO	ADMINISTRATION	YES	YES %	NO	NO %
12	Are the toilets cleaned properly	173	70%	73	30%
13	Are you provided with enough drinking water?	214	87%	32	13%
14	Is there student amenity centre (canteen)in your campus?	214	87%	32	13%
15	Do you think that your grievances are redressed when complain/ suggestion box is used	163	66%	83	34%
16	Are you aware of the functioning of a placement cell in our College?	201	82%	45	18%
17	Do you avail any scholarship from the college/ govt./ etc.	186	76%	60	24%



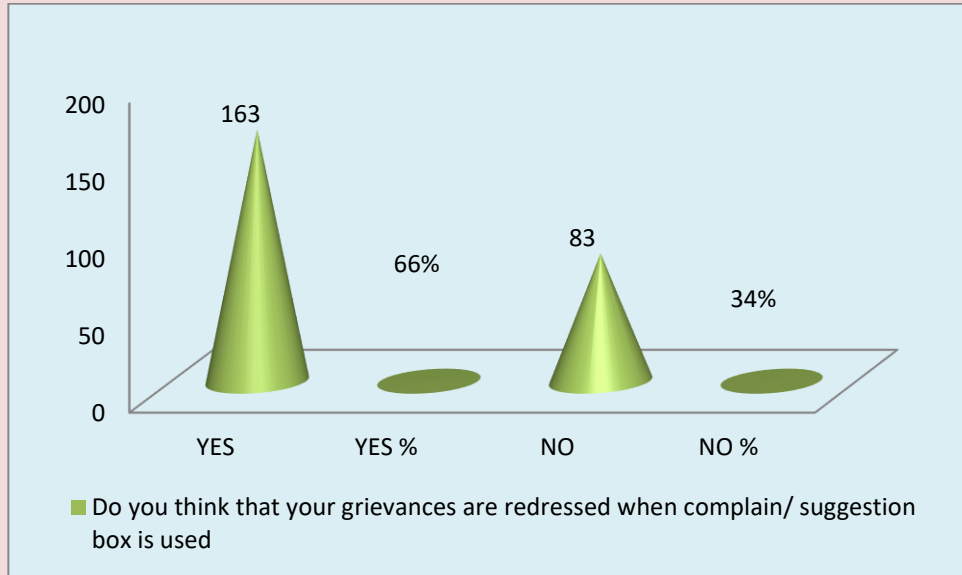
12. Are the toilets cleaned properly



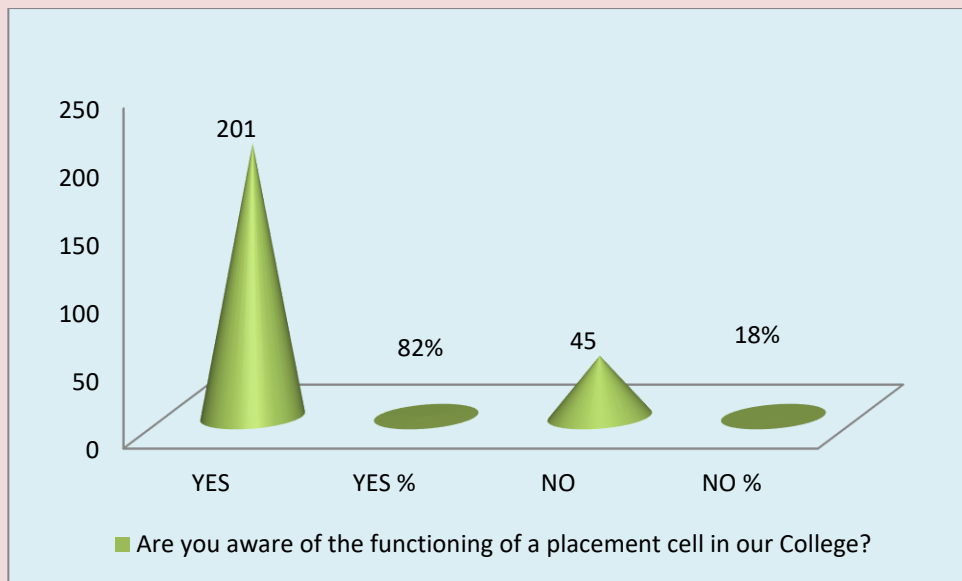
13. Are you provided with enough drinking water?



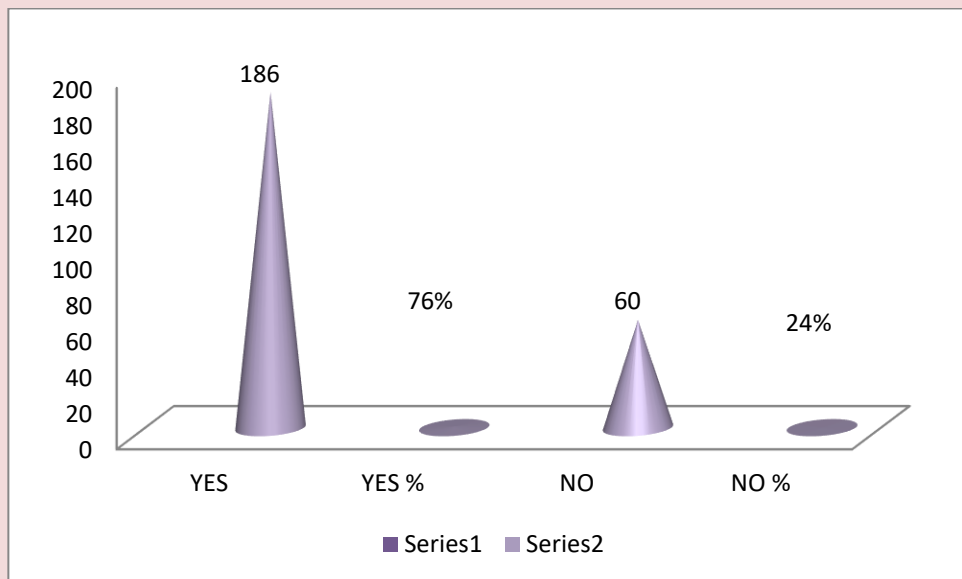
14. Is there student amenity centre (canteen) in your campus?



15. Do you think that your grievances are redressed when complain/ suggestion box is used.



16. Are you aware of the functioning of a placement cell in our College?



17. Do you avail any scholarship from the college/ govt./ etc

**SIGNATURE OF THE PRINCIPAL**

